

VENDOR NAME, ADDRESS AND NUMBER	
<b>MAC TO SCHOOL</b> 1530 MONTAGUE EXPRESSWAY SAN JOSE CA 95131	
VENDOR NUMBER:	V0001028879
DATE:	APR 27, 2016

SCHOOL / DEPARTMENT AND SHIP TO ADDRESS	
<b>KITTREDGE MAGNET SCHOOL</b> 1663 E. NANCY CREEK DRIVE, N. ATLANTA GA 30319	
SHIP TO ATTENTION OF AND TELEPHONE	
DEPT.: KITTREDGE MAGNE	LOC.: 237 00046

QUANTITY	UNIT	DESCRIPTION	UNIT PRICE	TOTAL
1	EA	MacBook Pro 13" MD101LL/A 2.5Ghz i5, 4GB, 500GB	699.0000	699.00
1	EA	iMAC 21.5" MC309LL/A Core i5 2.5Ghz, 4GB, 500GB TO BE USED IN THE FRONT OFFICE C/O ASEDP	799.0000	799.00
2	EA	WARRANTY- WA1YRMB99 Additional 1 year warranty for iMAC	99.0000	198.00

TERMS AND CONDITIONS	TOTAL INCLUDING SHIPPING
Comprehensive Terms and Conditions Are Made Part Of This Purchase Order Document and are available at <a href="http://www.dekalb.k12.ga.us/administration/purchasing/terms.html">www.dekalb.k12.ga.us/administration/purchasing/terms.html</a>	1696.00

**BELOW ARE ADDITIONAL TERMS AND CONDITIONS WHICH MAY APPLY**

This order may not be transferred or assigned to any other supplier without the advance, expressed, written permission of DeKalb County School District

**No substitutions or backorders allowed.**

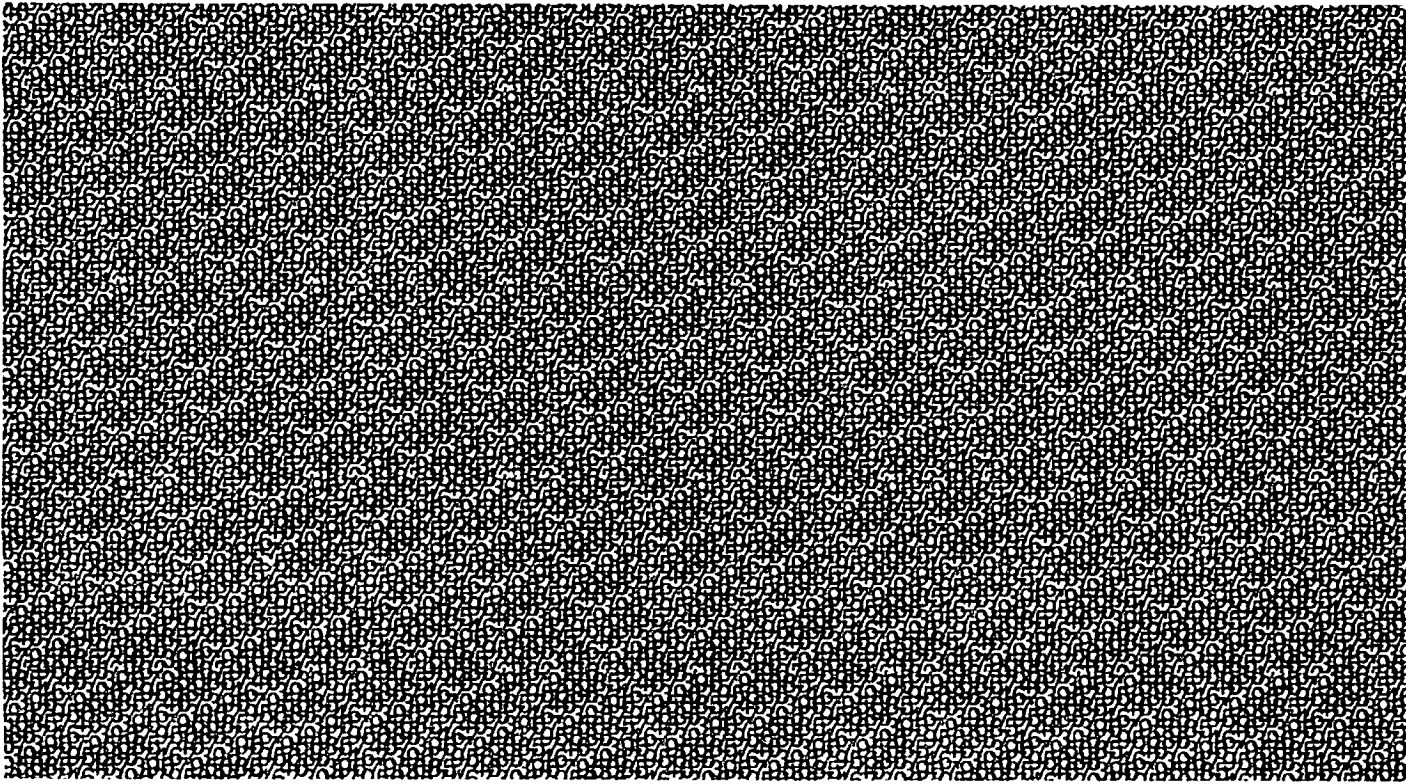
**NOTICE TO VENDOR**

FID # 58-6000227  
(DEKALB COUNTY BOARD OF EDUCATION)  
GA. TAX# 044-62-07992-0

1. INVOICES, CORRESPONDENCE, AND PACKAGES MUST CONTAIN COMPANY NAME, REMITTANCE ADDRESS AND DEKALB COUNTY SCHOOL DISTRICT PURCHASE ORDER NUMBER. ALTERED INVOICES WILL BE REJECTED.  
2. UNAUTHORIZED PRICE INCREASES ARE NOT HONORED. APPROVAL FOR VALID PRICE INCREASES MUST BE OBTAINED FROM PURCHASING DEPARTMENT AT (678) 676-1200 PRIOR TO SHIPMENT OR SERVICE RENDERED.  
3. DEKALB COUNTY SCHOOL DISTRICT IS EXEMPT FROM ALL TAXES.  
4. SHIPPING CHARGES ABOVE INDUSTRY STANDARDS WILL NOT BE PAID WITHOUT ACTUAL FREIGHT BILLS TO SUBSTANTIATE CHARGES. DEKALB COUNTY SCHOOL DISTRICT WILL PAY ONLY ACTUAL SHIPPING FEES. SEE ADDITIONAL TERMS AND CONDITIONS AT WEBSITE LISTED ABOVE IN TERMS AND CONDITIONS.

**AUTHORIZED BY**

*Paul A. ...*



9513131408 C013

MAC TO SCHOOL  
1530 MONTAGUE EXPRESSWAY  
SAN JOSE CA 95131

PAGE 01 OF 01

PO# 01629147

1701 MOUNTAIN INDUSTRIAL BLVD. - STONE MOUNTAIN, GEORGIA 30083  
PURCHASING DEPARTMENT

Dekalb County Board of Education

Dekalb County  
School Districts



0001395373APR 28 21  
02 1M  
ZIP 30083 \$ 000.4